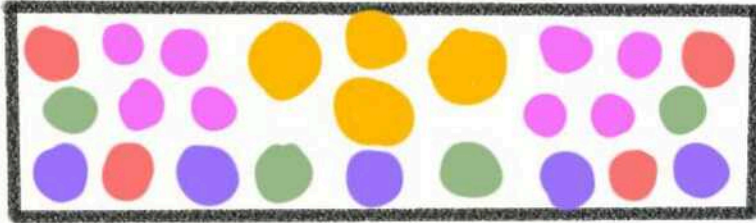


Container Gardens: Full Sun

Basic Requirements: Min. 12 inches depth (deeper is better)
Excellent Drainage + Leaf Mulch in the fall

2 ft Window Box

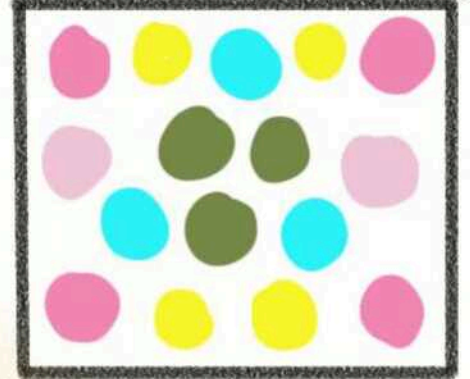


- Wild Strawberry
- Nodding Onion
- Horebell
- Black-eyed Susan
- Russian Toes



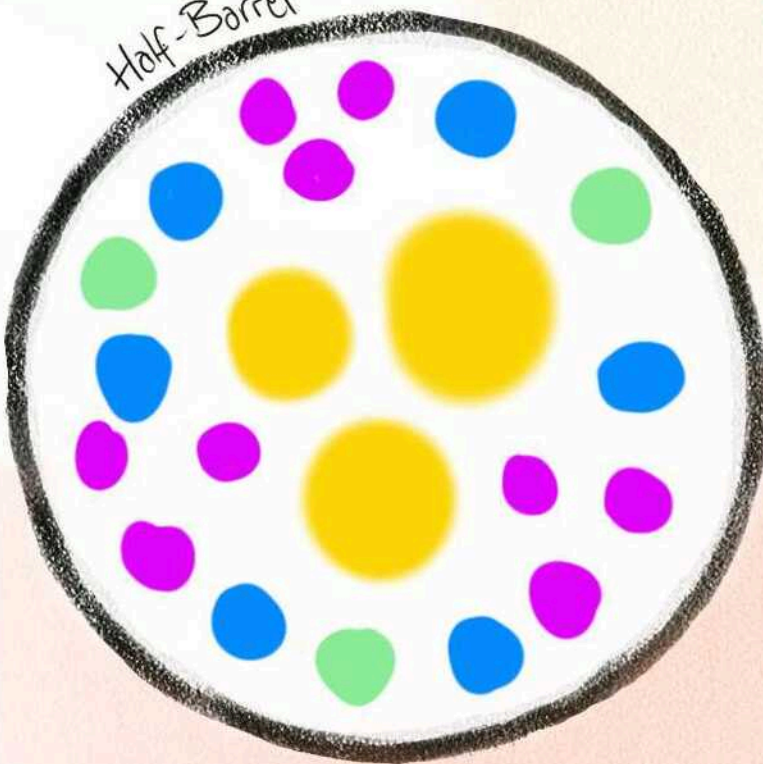
- Narrow-leaf Vervain
- Showy Goldenrod
- Virginia Mountain Mint

12x18 in 2ft tall Planter



- Prairie Smoke
- Sundrops
- Spotted Bee Balm
- Witchgrass
- Sky Blue Aster

Half-Barrel



- Cylindrical Blazing Star
- Longleaf Bluets
- Eastern Prickly Pear
- Silverweed

*Sandy, gravelly soil preferred